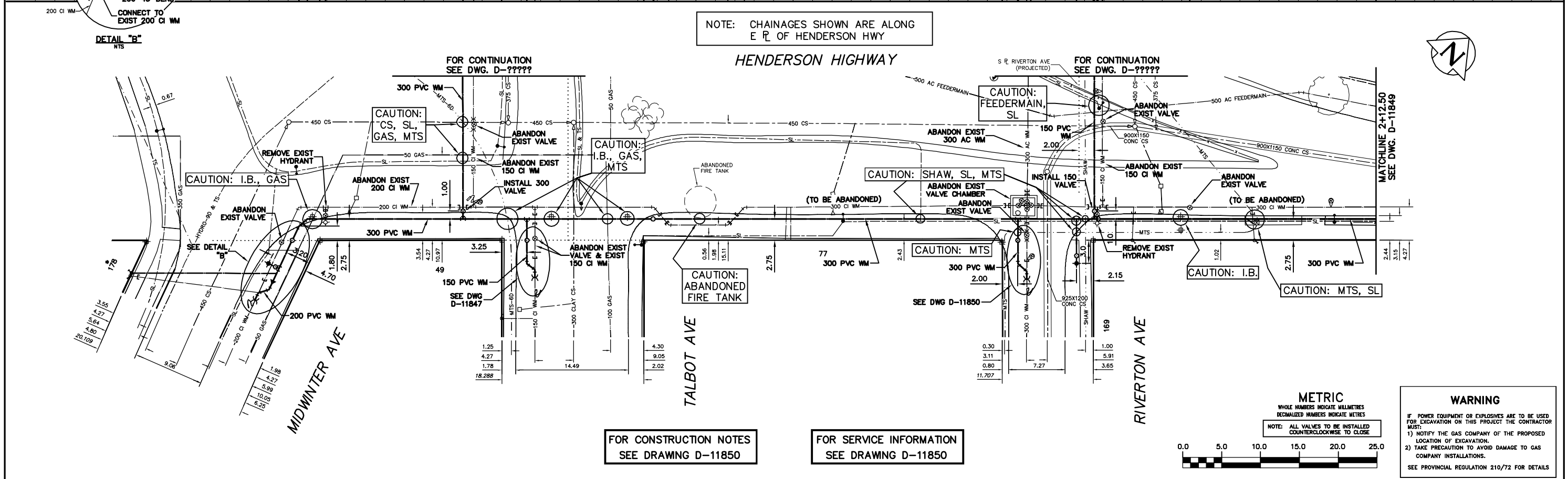
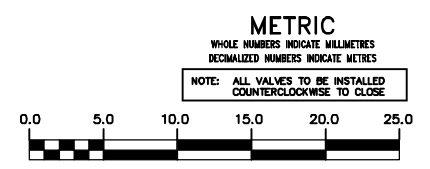


NOTE: CHAINAGES SHOWN ARE ALONG E R OF HENDERSON HWY



FOR CONSTRUCTION NOTES
SEE DRAWING D-11850

FOR SERVICE INFORMATION
SEE DRAWING D-11850



WARNING
IF POWER EQUIPMENT OR EXPLOSIVES ARE TO BE USED FOR EXCAVATION ON THIS PROJECT THE CONTRACTOR MUST:
1) NOTIFY THE GAS COMPANY OF THE PROPOSED LOCATION OF EXCAVATION.
2) TAKE PRECAUTION TO AVOID DAMAGE TO GAS COMPANY INSTALLATIONS.
SEE PROVINCIAL REGULATION 210/72 FOR DETAILS

| 200 WM | WATERMAIN | 200 WM | SL, HYDRO | 150 WM | WATERMAIN | 150 WM |
|----------|---------------------|----------|-------------------|----------------|-----------|-----------------------|
| + | HYDRANT | + | MTS | + | HYDRANT | + |
| o | VALVE | o | TRAFFIC SIGNALS | + | VALVE | + |
| 525 LDS | LAND DRAINAGE SEWER | 525 LDS | GAS | 50 GAS | 300 LDS | LAND DRAINAGE SEWER |
| 375 WWS | WASTEWATER SEWER | 375 WWS | SURVEY BAR | 250 WWS | 250 WWS | WASTEWATER SEWER |
| o | MANHOLE | o | FENCE | x | o | PROFILE |
| □ | CATCH BASIN | □ | POLE - HYDRO, MTS | ~ | ~ | GROUND ABOVE PIPE |
| ▽ | CURB INLET | ▽ | CURB STOP | ⊕ | ⊕ | DITCH (NORTH & WEST) |
| ∇ | REDUCER | ∇ | GUY ANCHOR | ⊕ | ⊕ | DITCH (SOUTH & EAST) |
| X | COUPLER | X | LIGHT STANDARD | ⊕ | ⊕ | GUTTER (NORTH & WEST) |
| ⊕ | ANODE | ⊕ | TREE | ⊕ | ⊕ | GUTTER (SOUTH & EAST) |
| EXISTING | LEGEND-PLAN | PROPOSED | EXISTING | LEGEND-PLAN | PROPOSED | EXISTING |
| | | | | LEGEND-PROFILE | | PROPOSED |

| LOCATION APPROVED | B.M. ELEV. | FIELD BOOK #: |
|---|------------|---------------|
| UNDERGROUND STRUCTURES | | |
| SUPV. U/G STRUCTURES COMMITTEE | | |
| DATE | | |
| NOTE: | | |
| LOCATION OF UNDERGROUND STRUCTURES AS SHOWN ARE BASED ON THE BEST INFORMATION AVAILABLE BUT NO GUARANTEE IS GIVEN THAT ALL EXISTING UTILITIES ARE SHOWN OR THAT THE GIVEN LOCATIONS ARE EXACT. CONFIRMATION OF EXISTENCE AND EXACT LOCATION OF ALL SERVICES MUST BE OBTAINED FROM THE INDIVIDUAL UTILITIES BEFORE PROCEEDING WITH CONSTRUCTION. | | |
| NO. REVISIONS | DATE | BY |

CITY OF WINNIPEG
WATER AND WASTE
ENGINEERING DIVISION

DESIGNED BY: AS
CHECKED BY: SC/KZ

DRAWN BY: CJH
APPROVED BY: KZ

HOR. SCALE: 1:250
VERTICAL: 1:50

RELEASED FOR CONSTRUCTION
K.R. ZUREK

DATE: 2009 08 07
DATE: 2009 08 07

ENGINEER'S SEAL
ORIGINAL SIGNED BY A. SINGBEIL
09/08/07

THE CITY OF WINNIPEG
WATER AND WASTE DEPARTMENT

2009 WATERMAIN RENEWALS
CONTRACT 42
HENDERSON HIGHWAY
MIDWINTER AVENUE TO
40 N OF RIVERTON AVENUE

SHEET 2 OF 6
CITY DRAWING NUMBER
D-11848

BID OPPORTUNITY 596-2009
FILENAME: D-11848.dwg
PLOT DATE: 2009 08 07