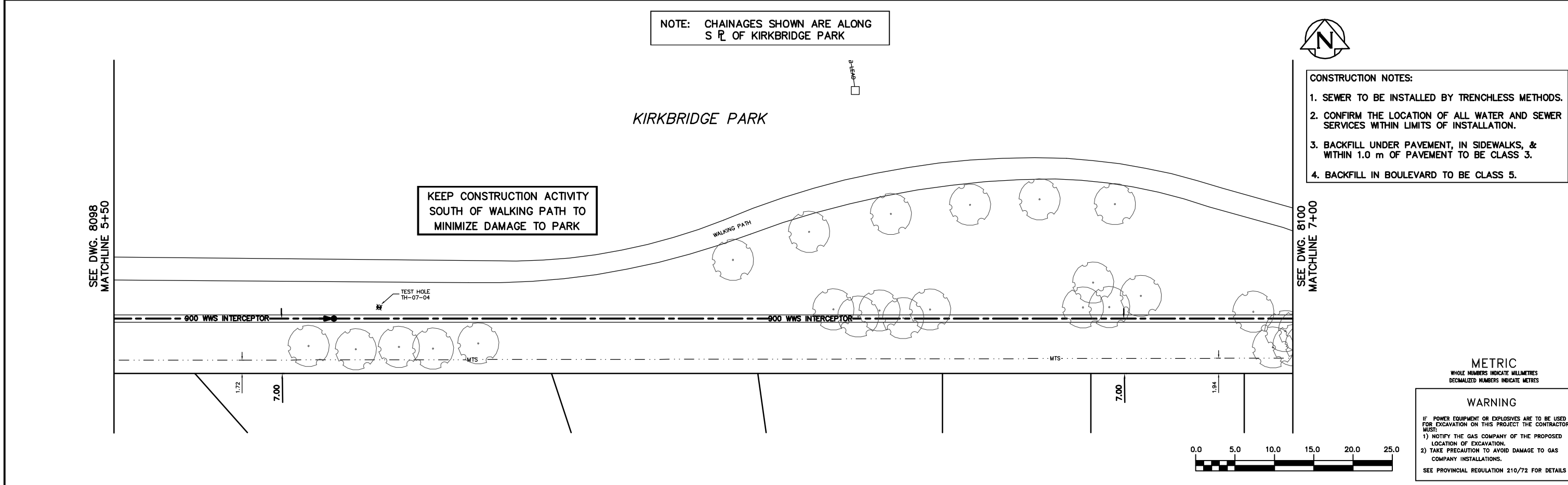


NOTE: CHAINAGES SHOWN ARE ALONG S  $\phi$  OF KIRKBRIDGE PARK



- CONSTRUCTION NOTES:**
- SEWER TO BE INSTALLED BY TRENCHLESS METHODS.
  - CONFIRM THE LOCATION OF ALL WATER AND SEWER SERVICES WITHIN LIMITS OF INSTALLATION.
  - BACKFILL UNDER PAVEMENT, IN SIDEWALKS, & WITHIN 1.0 m OF PAVEMENT TO BE CLASS 3.
  - BACKFILL IN BOULEVARD TO BE CLASS 5.



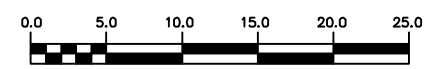
SEE DWG. 8100 MATCHLINE 7+00

SEE DWG. 8098 MATCHLINE 5+50

**METRIC**  
WHOLE NUMBERS INDICATE MILLIMETRES  
DECIMALIZED NUMBERS INDICATE METRES

**WARNING**

IF POWER EQUIPMENT OR EXPLOSIVES ARE TO BE USED FOR EXCAVATION ON THIS PROJECT THE CONTRACTOR MUST:  
 1) NOTIFY THE GAS COMPANY OF THE PROPOSED LOCATION OF EXCAVATION.  
 2) TAKE PRECAUTION TO AVOID DAMAGE TO GAS COMPANY INSTALLATIONS.  
 SEE PROVINCIAL REGULATION 210/72 FOR DETAILS



200 WM	WATERMAIN	200 WM	SL, HYDRO	150 WM	WATERMAIN	150 WM
⊕	HYDRANT	⊕	MTS	⊕	HYDRANT	⊕
⊙	VALVE	⊙	TRAFFIC SIGNALS	⊕	VALVE	⊕
525 LDS	LAND DRAINAGE SEWER	525 LDS	50 GAS	300 LDS	LAND DRAINAGE SEWER	300 LDS
375 WWS	WASTEWATER SEWER	375 WWS	50 GAS	250 WWS	WASTEWATER SEWER	250 WWS
○	MANHOLE	●	SURVEY BAR	⊕	⊕ PROFILE	⊕
□	CATCH BASIN	■	FENCE	⊕	GROUND ABOVE PIPE	⊕
▽	CURB INLET	▽	POLE - HYDRO, MTS	⊕	⊕ DITCH (NORTH & WEST)	⊕
⊕	JUNCTIONS	⊕	CURB STOP	⊕	⊕ DITCH (SOUTH & EAST)	⊕
⊕	CULVERT	⊕	GUY ANCHOR	⊕	⊕ GUTTER (NORTH & WEST)	⊕
⊕	ANODE	⊕	LIGHT STANDARD	⊕	⊕ GUTTER (SOUTH & EAST)	⊕
⊕	EXISTING	⊕	TREE	⊕	⊕	⊕
⊕	LEGEND-PLAN	⊕	LEGEND-PLAN	⊕	LEGEND-PROFILE	⊕

LOCATION APPROVED UNDERGROUND STRUCTURES		B.M. ELEV.	FIELD BOOK #:
SUPV. U/G STRUCTURES COMMITTEE	DATE	POSTED TO LBS	
NOTE: LOCATION OF UNDERGROUND STRUCTURES AS SHOWN ARE BASED ON THE BEST INFORMATION AVAILABLE BUT NO GUARANTEE IS GIVEN THAT ALL EXISTING UTILITIES ARE SHOWN OR THAT THE GIVEN LOCATIONS ARE EXACT. CONFIRMATION OF EXISTENCE AND EXACT LOCATION OF ALL SERVICES MUST BE OBTAINED FROM THE INDIVIDUAL UTILITIES BEFORE PROCEEDING WITH CONSTRUCTION.			
NO.	REVISIONS	DATE	BY

**CITY OF WINNIPEG**  
WATER AND WASTE ENGINEERING DIVISION

DESIGNED BY: SC  
 CHECKED BY: KZ  
 DRAWN BY: PB/DD  
 APPROVED BY: KZ  
 HOR. SCALE: 1:250  
 VERTICAL: 1:50  
 DATE: 2008 11 24

ENGINEER'S SEAL  
 ORIGINAL SIGNED BY S.R.J. COURNOYER  
 08/11/24

**THE CITY OF WINNIPEG**  
WATER AND WASTE DEPARTMENT

**2008 WAVERLEY WEST INTERCEPTOR SEWER**  
 PHASE 1B-KIRKBRIDGE DR TO WAVERLEY ST  
 KIRKBRIDGE PARK  
 110 m EAST OF BAIRDMORE BLVD TO  
 260 m EAST OF BAIRDMORE BLVD

SHEET 5 OF 7  
 CITY DRAWING NUMBER  
 8099