

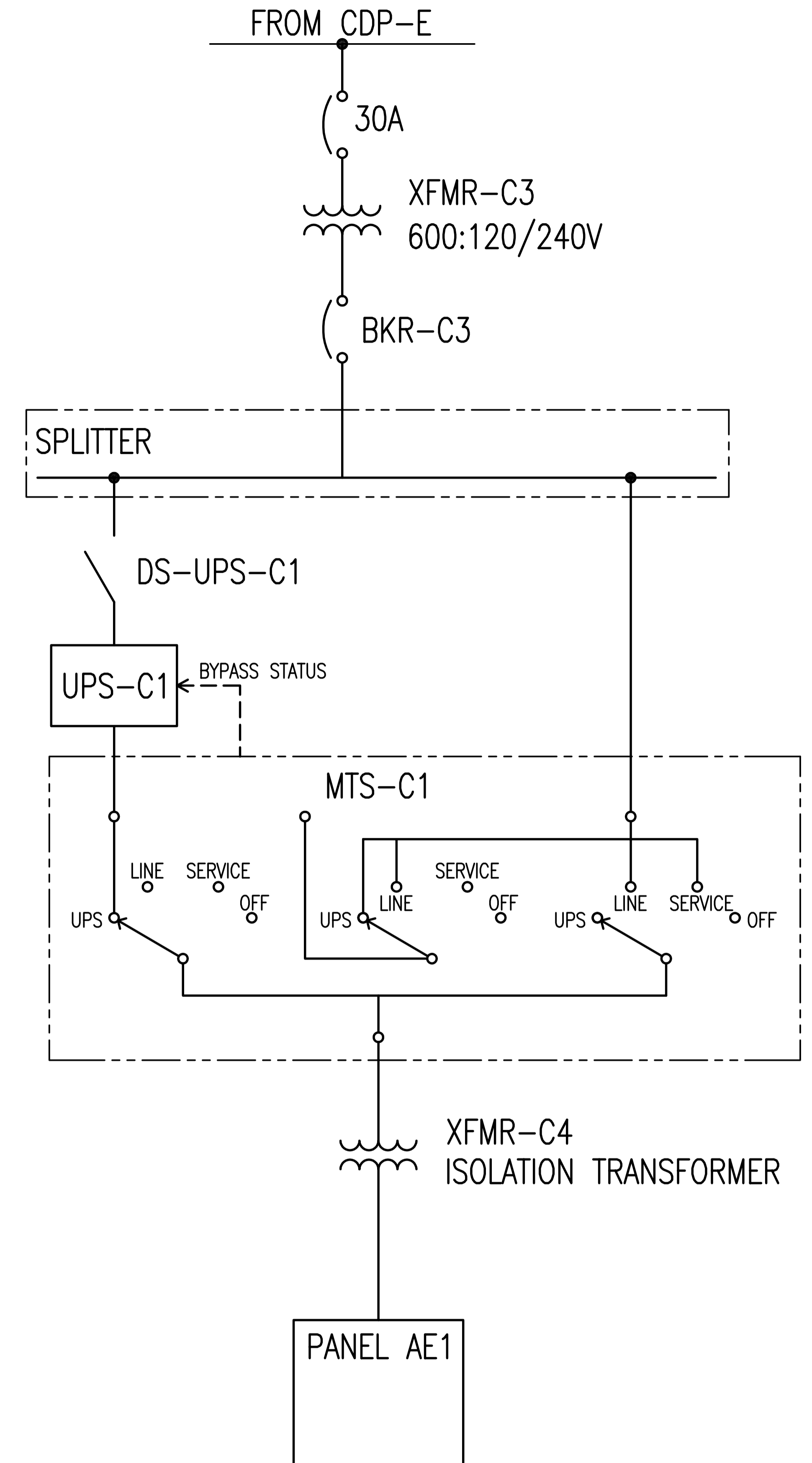
# UPS-C1 INSTRUCTIONS

## Startup Procedure

1. Turn MTS-C1 (Manual Transfer Switch) to the *Line* position.
2. Ensure that breaker BKR-C3 is closed and supplying power.
3. Close the disconnect switch, DS-UPS-C1 to supply power to the UPS.
4. Turn on the UPS battery circuit breaker, located at the rear of the UPS.
5. Wait for the indicator to illuminate on the UPS.
6. Turn MTS-C1 to the *UPS* position.
7. Verify that the indicator is off.

## Shutdown Procedure

1. Turn MTS-C1 (Manual Transfer Switch) from the *UPS* position to the *Line* position.
2. Press the button on the front panel display and then press the button to select the *TURN UPS ON/OFF* menu.
3. Press the button to select the *TURN UPS OFF* option; press the button.
4. Confirm the selection. Press and hold the button for three seconds, until the UPS stops beeping.
5. Turn off the UPS battery circuit breaker, located at the rear of the UPS.
6. Turn off the disconnect switch DS-UPS-C1.



DRAWING NUMBER	REFERENCE DRAWINGS

**APECM**  
 Certificate of Authorization  
 SNC-Lavalin Inc. (MB)  
 No. 4489 Expiry: April 30, 2008

B.M. ELEV.	FIELD BOOK #:	<b>SNC-LAVALIN INC.</b> 148 Nature Park Way Winnipeg, MB, Canada R3P 0X7 204-798-8080	ENGINEER'S SEAL
POSTED TO LBIS			DESIGNED BY C. REIMER CHECKED BY C. REIMER DRAWN BY E. BOHNCKE APPROVED BY HOR. SCALE NTS VERTICAL NTS RELEASED FOR CONSTRUCTION DATE 2007/10/11 DATE
0 ISSUED FOR TENDER	2008/01/08	AEO	PRELIMINARY <b>NOT TO BE USED FOR CONSTRUCTION</b>
NO. REVISIONS	DATE	BY	FILENAME: 1-0620C-E0005-001-00.dwg

<b>THE CITY OF WINNIPEG</b> WATER AND WASTE DEPARTMENT	DEACON CHEMICAL FEED BUILDING UPS UPGRADES OPERATING INSTRUCTIONS UPS-C1
CITY DRAWING NUMBER	SHEET REV. SIZE
1-0620C-E0005	001 0 A1