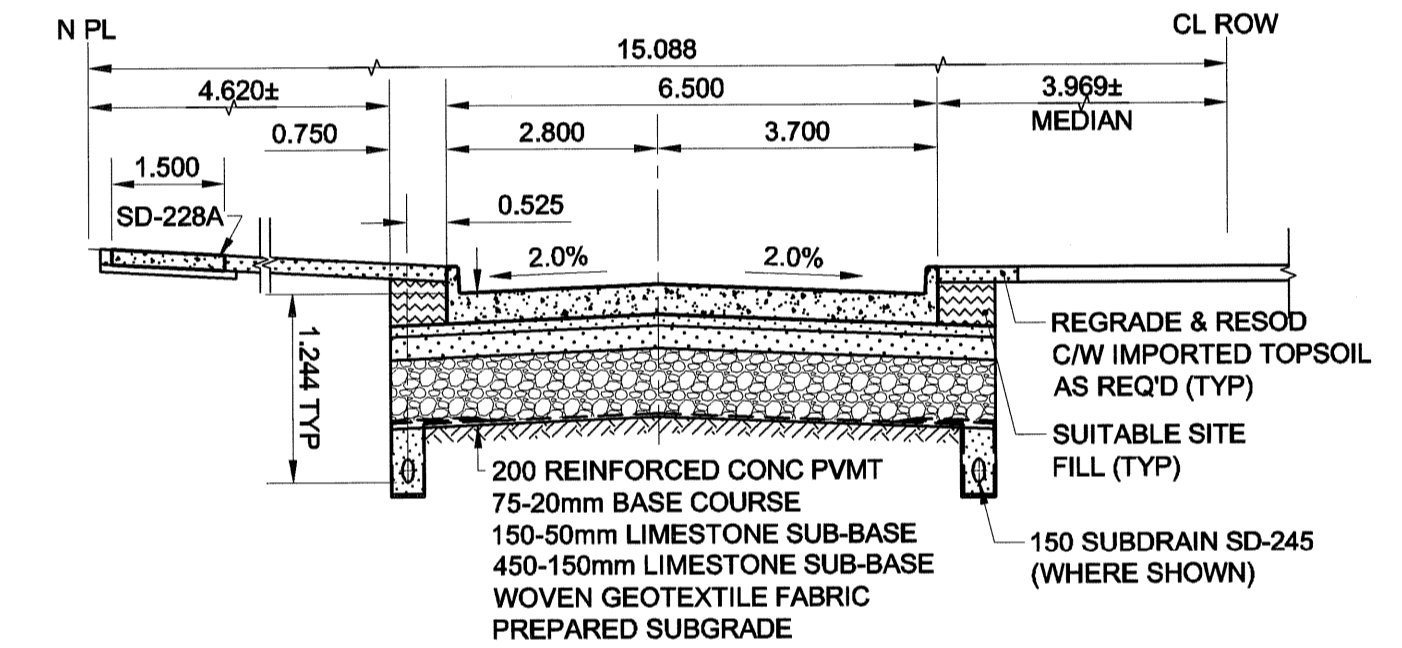
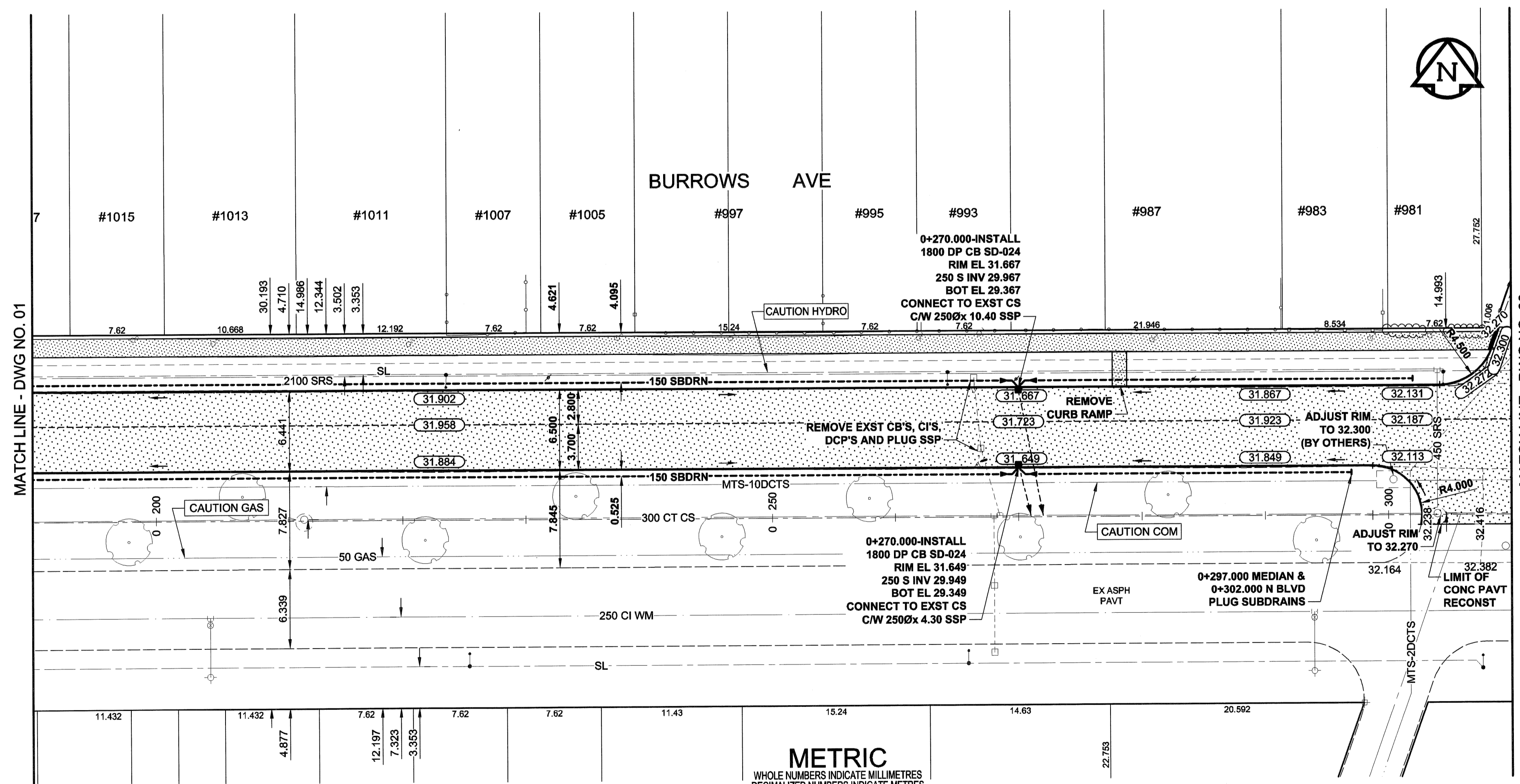


PAVEMENT PROFILE

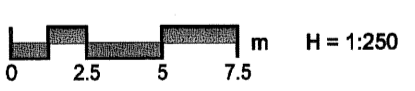


PVMT SECTION



- NOTES**
1. ADJUST MH AND CB RIMS TO NEW GRADES.
 2. CONTRACTOR TO EXERCISE CAUTION WHEN INSTALLING 150 SUBDRAIN TO PREVENT CROSSING CONFLICTS WITH EXST. GAS SERVICES. LAMP STANDARDS, HYDRO POLES, AND ANCHORS MAY REQUIRE TEMPORARY SUPPORT/REMOVAL OR REPLACEMENT AT THE CONTRACTOR'S EXPENSE.
 3. CONTRACTOR SHALL TAKE PRECAUTIONARY STEPS TO AVOID DAMAGE FROM CONSTRUCTION ACTIVITIES TO EXISTING BOULEVARD TREES WITHIN THE LIMITS OF CONSTRUCTION AS OUTLINED IN THE SPECIFICATIONS.
 4. CONTRACTOR SHALL REGRADE EXST. PRIVATE SIDEWALKS. LIMITS TO BE DETERMINED.
 5. THE LOCATION OF ALL SERVICES TO BE CONFIRMED IN THE FIELD BY THE CONTRACTOR.
 6. ADD 200.000m TO ABBREVIATED ELEVATIONS TO OBTAIN GEODETIC ELEVATIONS.

METRIC
WHOLE NUMBERS INDICATE MILLIMETRES
DECIMALIZED NUMBERS INDICATE METRES



APEGM
Certificate of Authorization
UMA Engineering Ltd.
No. 256 Expiry: April 30, 2007

BID OPPORTUNITY NO. 299-2006

NATURAL GAS	MANHOLE	CONCRETE PAVEMENT	LOCATION APPROVED
COMMUNICATION	CATCH BASIN / CATCH PIT	ASPHALT PAVEMENT	UNDERGROUND STRUCTURES
HYDRO	C & G INLET WITH BOX	CONC. SIDEWALK/MEDIAN	DATE
CATV	TREE	PAVING STONE	COMMITTEE
TRAFFIC SIGNALS	TEST HOLE	TOPSOIL & SOD	NOTE:
LAND DRAINAGE SEWER	PROPERTY LINE	GRAVEL	LOCATION OF UNDERGROUND STRUCTURES
SANITARY/COMBINED SEWER	SURVEY BAR	CURB RAMP	AS SHOWN ARE BASED ON THE BEST
CATCHBASIN LEAD	FENCE	PLANING	INFORMATION AVAILABLE. BUT NO
WATERMAIN	BOC/EOPAVT		GUARANTEE IS GIVEN THAT ALL EXISTING
SUBDRAIN	ELEVATION		UTILITIES ARE SHOWN OR THAT THE GIVEN
DITCH			LOCATIONS ARE EXACT. CONFIRMATION OF
EXISTING			EXISTENCE AND EXACT LOCATION OF ALL
LEGEND - PLAN			SERVICES MUST BE OBTAINED FROM THE
NEW			INDIVIDUAL UTILITIES BEFORE PROCEEDING
EXISTING			WITH CONSTRUCTION.

BM 25-017	DATE	BY
ELEV 231.977m	06/05/02	DID
	06/05/05	DID
NO.	REVISIONS	DATE
	Y/M/MDD	

UMA | AECOM

© 2006 UMA ENGINEERING LTD. ALL RIGHTS RESERVED.

DESIGNED BY: JGK
DRAWN BY: DID
HOR. SCALE: AS SHOWN
VERT. SCALE: 1:250
DATE: 06/05/05

CHECKED BY: RPS
APPROVED BY: [Signature]
DATE: JUNE 1, 2006

PROFESSIONAL'S SEAL
PROVINCE OF MANITOBA
MAY 31/06
J.G. KENNEDY
Member
22326
REGISTERED PROFESSIONAL ENGINEER
CONSULTANT DRAWING NO.
0265-379-00_01-CT1002_RX

THE CITY OF WINNIPEG
PUBLIC WORKS DEPARTMENT
ENGINEERING DIVISION

BURROWS AVENUE
SGT TOMMY PRINCE ST TO BATTERY ST
RECONSTRUCTION

HORIZONTAL AND VERTICAL ALIGNMENT
FROM STA 0+190 TO STA 0+310

CITY DRAWING NUMBER: N/A
SHEET 2 OF 14
DRAWING No. 02
REV 0