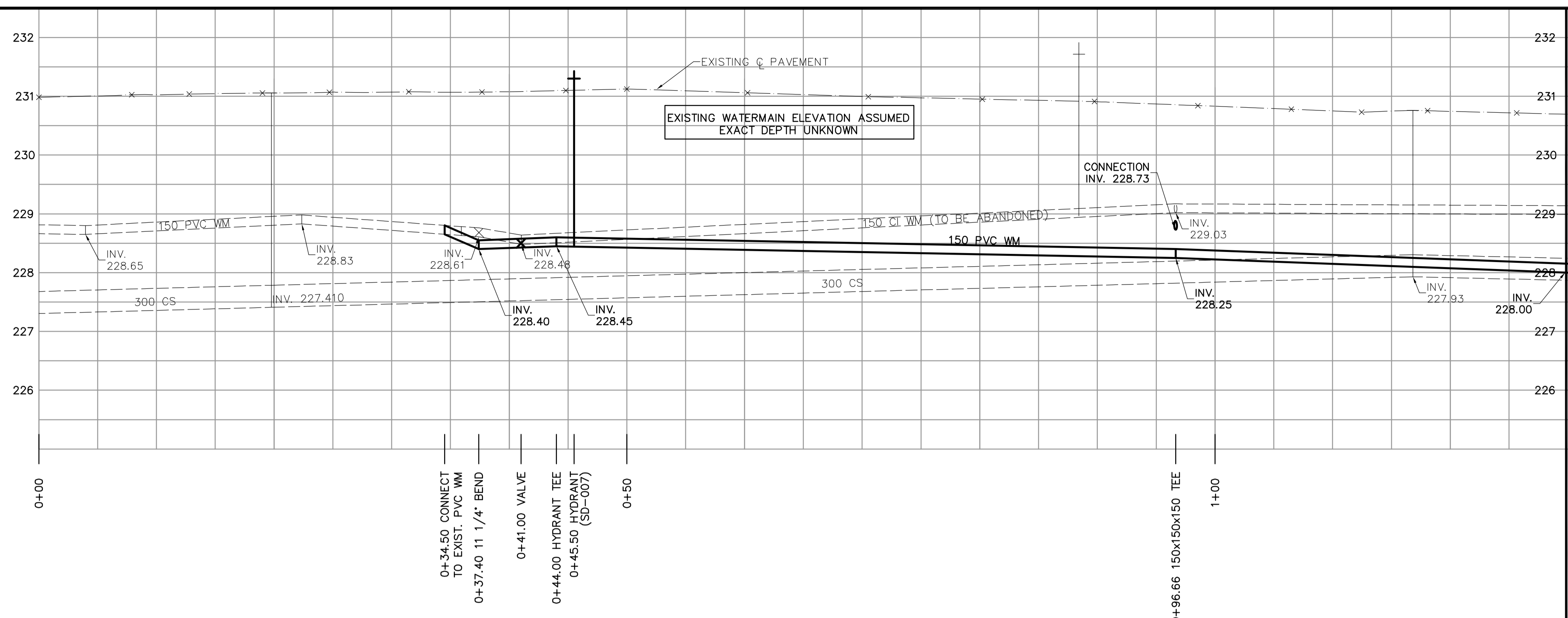
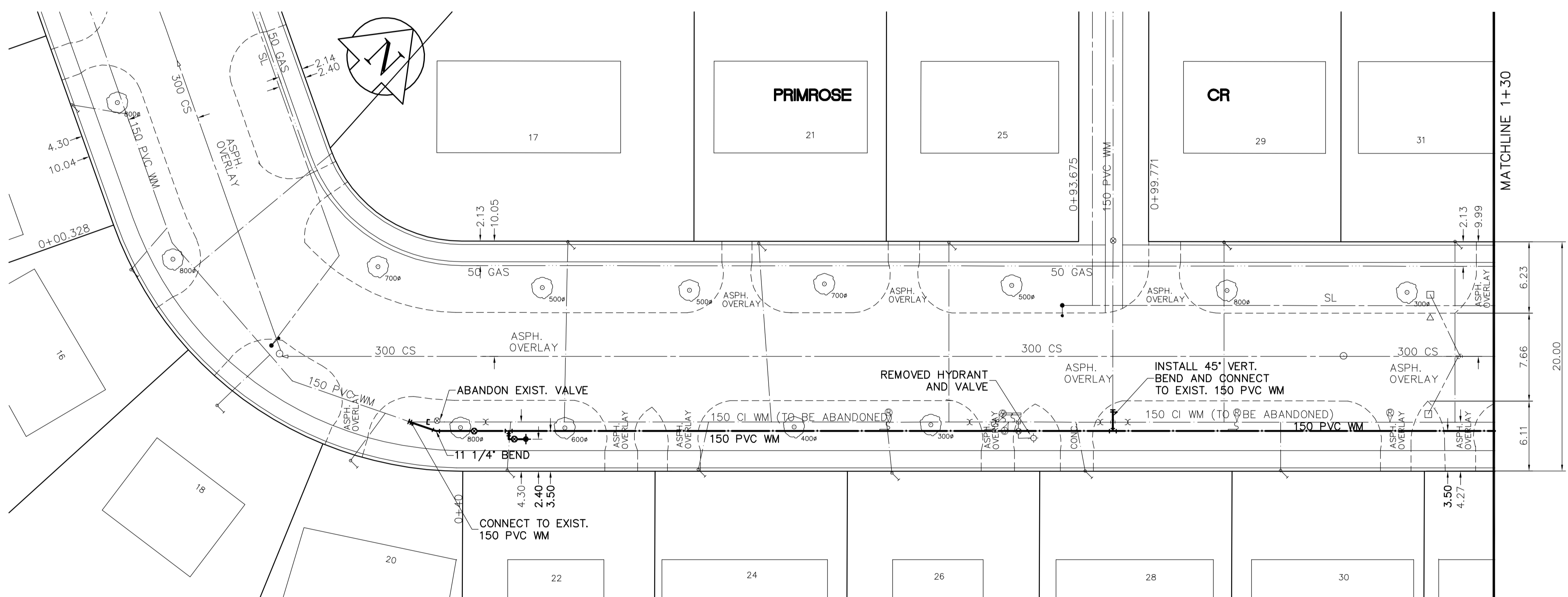


SHEET: GOW-WM-A1 (11/2002) FILE NAME: L:\work\85539\026-CAD\WWT\Comp\85539-C09.dwg
 LAYOUT NAME: 85539-C09 PLOTTED BY: michael.kocher
 Jan 16, 2005 - 8:49am



MATCHLINE 1+30

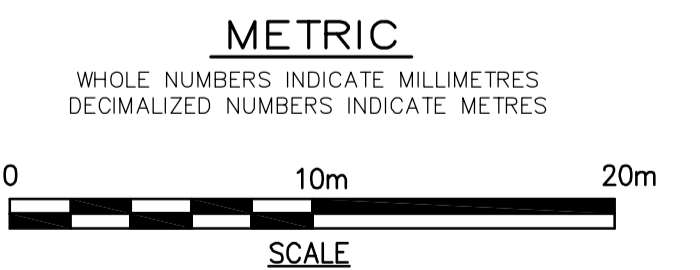
MATCHLINE 1+30



- CONSTRUCTION NOTES**
1. EXPOSE WATERMAIN CONNECTIONS AND CONFIRM INVERTS PRIOR TO CONSTRUCTION.
 2. INSTALL WATERMAIN BY TRENCHLESS METHODS.
 3. ALL MATERIALS SHALL CONFORM TO THE CITY OF WINNIPEG STANDARD CONSTRUCTION SPECIFICATIONS.
 4. MINIMUM COVER TO TOP OF PROPOSED WATERMAIN SHALL BE 2.5m FROM STREET CENTERLINE.
 5. INSTALL ALL HYDRANTS WITH FLANGE ELEVATION 50mm- 150mm ABOVE FINISHED GRADE.
 6. REPLACE ALL EXISTING LEAD SERVICES FROM THE PROPOSED WATERMAIN TO PROPERTY LINE.
 7. NOTIFY ALL AFFECTED RESIDENTS AND BUSINESSES 24 HOURS IN ADVANCE OF ANY WATER SHUTDOWN OR DISRUPTION OF SERVICE.
 8. LOCATION OF PREVIOUS WATERMAIN BREAKS SHOWN THUS @ IS APPROXIMATE AND FOR INFORMATION ONLY. NO GUARANTEE IS GIVEN TO THE COMPLETENESS OR ACCURACY OF THIS INFORMATION.
 9. LOCATION OF WATER SERVICES SHOWN ON DRAWINGS ARE APPROXIMATE. THE CONTRACTOR SHALL FIELD LOCATE ALL WATER SERVICES PRIOR TO CONSTRUCTION.
 10. ALL VALVES SHALL BE BLACK TOP (CLOCKWISE TO CLOSE).
 11. BACKFILL UNDER OR WITHIN 1.0m OF PAVEMENTS, INCLUDING SIDEWALKS SHALL BE CLASS 3 BACKFILL EXCEPT AS NOTED. BACKFILL IN BOULEVARDS SHALL BE CLASS 5 BACKFILL.
 12. RENEW ALL LEAD SERVICES TO PROPERTY LINE.

ADDRESS	NATURE OF SERVICE	DISTANCE SC TO PROPERTY	SIZE	MATERIAL	POSITION OF SC (curb stop)	POSITION OF CC (corp)	COMMENTS:
24	PRIMOSE CR RESIDENTIAL	0.2 m	19 mm	COPPER	Long: 28.0 m S of HYDT N Short: 0.2 m S of SL	PRIMOSE HOUSE Short: 0.9 m N of S/C	
22	PRIMOSE CR RESIDENTIAL	0.2 m	19 mm	COPPER	Long: 44.8 m S of HYD N Short: 0.1 m S of SL	PRIMOSE HOUSE Short: 0.3 m N of S/C	
21	PRIMOSE CR RESIDENTIAL	0.3 m	19 mm	COPPER	Long: 22.9 m S of 1ST HYD N Short: 4.0 m W of SL	PRIMOSE HOUSE Short: 1.1 m N of S/C	
20	PRIMOSE CR RESIDENTIAL	0.2 m	19 mm	COPPER	Long: 9.8 m N of N LOT Short: 5.2 m N of SL	HOUSE Short: 1.5 m N of S/C	CONN TO NEW W/MAIN July 31/90
18	PRIMOSE CR RESIDENTIAL	1.7 m	19 mm	COPPER	Long: 136.2 m E of EL Short: 6.1 m S of NL	SINCLAIR HOUSE Short: 0.3 m W of S/C	CONN TO NEW W/MAIN July 31/90
17	PRIMOSE CR RESIDENTIAL	0.2 m	19 mm	COPPER	Long: 39.5 m S of 1ST HYD N Short: 4.8 m S of NL	PRIMOSE HOUSE Short: 0.3 m S of S/C	

ADDRESS	NATURE OF SERVICE	DISTANCE SC TO PROPERTY	SIZE	MATERIAL	POSITION OF SC (curb stop)	POSITION OF CC (corp)	COMMENTS:
31	PRIMOSE CR RESIDENTIAL	0.2 m	19 mm	COPPER	Long: 38.4 m N of 1ST HYD N Short: 4.8 m S of NL	PRIMOSE HOUSE Short: 0.8 m S of S/C	
30	PRIMOSE CR RESIDENTIAL	0.0 m	19 mm	COPPER	Long: 23.0 m W of HYDT N Short: 2.7 m N of SL	PRIMOSE HOUSE Short: 0.8 m S of S/C	
29	PRIMOSE CR RESIDENTIAL	0.2 m	19 mm	COPPER	Long: 18.1 m N of 1ST HYD N Short: 3.8 m N of SL	PRIMOSE HOUSE Short: 0.8 m S of S/C	
28	PRIMOSE CR RESIDENTIAL	0.2 m	19 mm	COPPER	Long: 5.9 m N of 1ST HYDT N Short: 0.5 m S of SL	PRIMOSE HOUSE Short: 0.8 m S of S/C	
26	PRIMOSE CR RESIDENTIAL	0.2 m	19 mm	COPPER	Long: 11.3 m S of HYDT N Short: 0.2 m S of SL	PRIMOSE HOUSE Short: 0.5 m S of S/C	
25	PRIMOSE CR RESIDENTIAL	0.2 m	19 mm	COPPER	Long: 6.0 m S of 1ST HYD N Short: 2.7 m N of SL	PRIMOSE HOUSE Short: 0.8 m S of S/C	



EXISTING	LEGEND - PLAN	PROPOSED	EXISTING	LEGEND - PROFILE	PROPOSED
	WATERMAIN			WATERMAIN	
	HYDRANT VALVE			HYDRANT VALVE	
	LAND DRAINAGE SEWER WASTEWATER SEWER			LAND DRAINAGE SEWER WASTE WATER SEWER	
	WASTEWATER SEWER			WASTEWATER SEWER	
	MANHOLE			MANHOLE	
	CATCH BASIN			CATCH BASIN	
	CURB INLET			CURB INLET	
	JUNCTIONS			JUNCTIONS	
	CULVERT			CULVERT	
	GAS			GAS	
	HYDRO TELEPHONE			HYDRO TELEPHONE	
	CONCRETE ASPHALT PROPERTY LINE			CONCRETE ASPHALT PROPERTY LINE	
	SURVEY BAR			SURVEY BAR	
	CURB STOP			CURB STOP	
	TREE			TREE	
	ANODE			ANODE	
	CONCRETE SIDEWALK			CONCRETE SIDEWALK	
	FENCE			FENCE	

LOCATION APPROVED UNDERGROUND STRUCTURES

SUPV. U/G STRUCTURES COMMITTEE DATE

NOTE:
 LOCATION OF UNDERGROUND STRUCTURES AS SHOWN ARE BASED ON THE BEST INFORMATION AVAILABLE. BUT NO GUARANTEE IS GIVEN THAT ALL EXISTING UTILITIES ARE SHOWN OR THAT THE GIVEN LOCATIONS ARE EXACT. CONFIRMATION OF EXISTENCE AND EXACT LOCATION OF ALL SERVICES MUST BE OBTAINED FROM THE INDIVIDUAL UTILITIES BEFORE PROCEEDING WITH CONSTRUCTION.

NO.	REVISIONS	DATE	BY
0	ISSUED FOR TENDER	05/06/16	GSK
A	ISSUED FOR REVIEW	05/06/13	GSK

EARTH TECH
 A tyco INTERNATIONAL LTD. COMPANY
 Earth Tech (Canada) Inc. Winnipeg, Manitoba 204-477-5381

DESIGNED BY: GSK CHECKED BY: KWF
 DRAWN BY: MAF APPROVED BY: K. ZUREK

HOR. SCALE: 1:250
 VERTICAL SCALE: 1:50

RELEASED FOR CONSTRUCTION BY: K. ZUREK
 DATE: 05/06/16

ENGINEER'S SEAL

ORIGINAL SIGNED BY: K.W. FITCHETT
 JUNE 16/05

CONSULTANT DRAWING NO. 85539-C09

THE CITY OF WINNIPEG
 Winnipeg WATER AND WASTE DEPARTMENT

2005 WATERMAIN RENEWALS CONTRACT 10

PRIMOSE CRESCENT SOUTH LEG OF PRIMOSE CRESCENT TO STATION 1+30

SHEET 9 OF 16
 CITY DRAWING NUMBER D-8772