

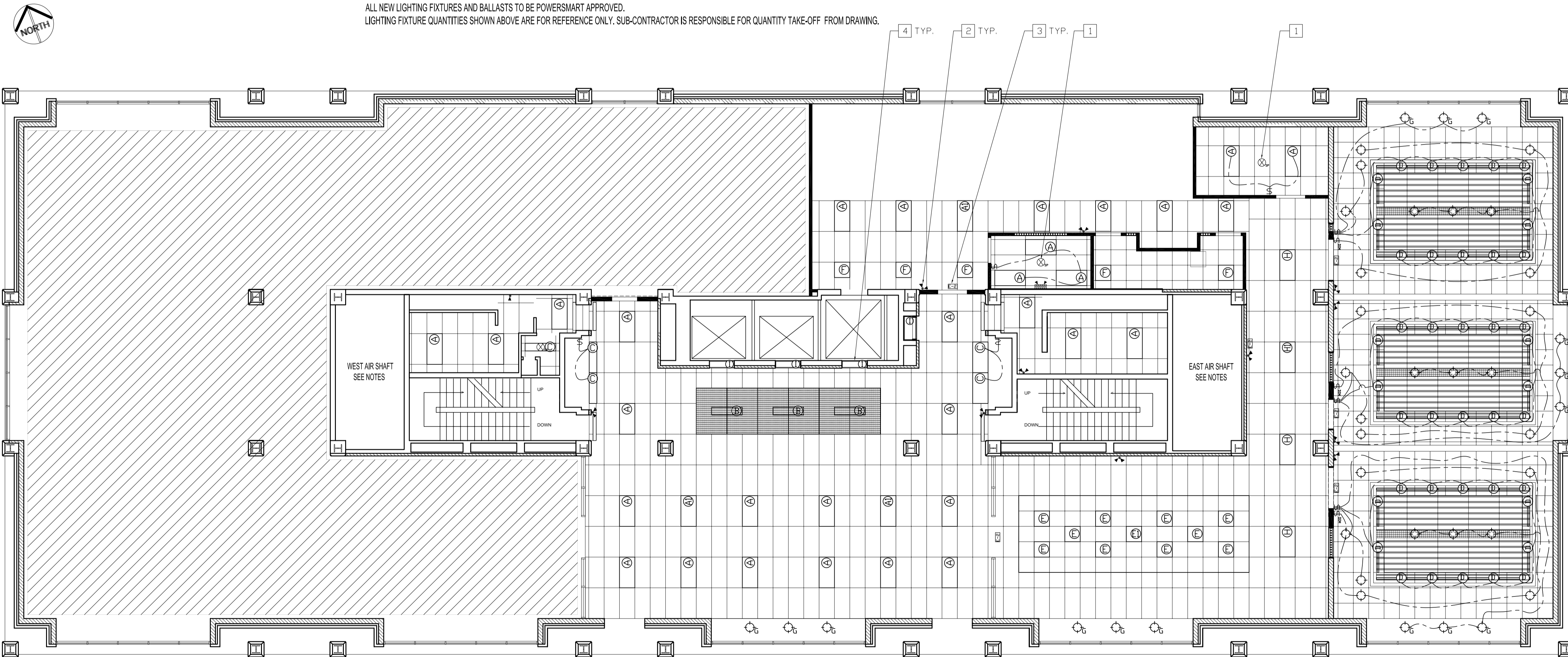
ELECTRICAL LIGHTING RENOVATION NOTES:

SEE DRAWING E-1 FOR ELECTRICAL DATA & PHONE SYMBOLS

- 1 SUPPLY & INSTALL DIRECT WIRE, EDWARDS PHOTO ELECTRIC SMOKE DETECTOR. ALL NEW SMOKE DETECTORS SHALL BE HOME RUN WIRING TO EXISTING FIRE ALARM ADDRESSABLE PANEL LOCATED IN THE BASEMENT OF 510 MAIN STREET.
- 2 SUPPLY & INSTALL EMERGENCY LIGHT.
- 3 SUPPLY & INSTALL EMERGENCY EXIT SIGN AT SAME HEIGHT AS STAIRWAY EXIT SIGNS.
- 4 CLEAN EXISTING FLUORESCENT LIGHT FIXTURES, RELAMP & REPLACE LOUVERS TO SUIT.

NEW LIGHT FIXTURE SCHEDULE					
TYPE	QTY.	MANUFACTURER	CATALOGUE No.	LAMP	DESCRIPTION
(A)	31	LITHONIA	2GT-4-32-A12125-120-GEB10IS	4 X 32W T8 48"	2' X 4', 4 LAMP TROFFER, 120V, INSTANT START BALLAST ACRYLIC DIFFUSER.
(AD)	3	LITHONIA	2GT-4-32-A12125-120-GEB10IS	4 X 32W T8 48"	2' X 4', 4 LAMP TROFFER, 120V, INSTANT START BALLAST ACRYLIC DIFFUSER, A1 TO BE WIRED AS NIGHTLIGHT.
(B)	3	LITHONIA	EJA-2-32-120-GEB10IS	2 X 32W T8 48"	1' X 4', 2 LAMP WITH 5% UPLIGHT, 120V, INSTANT BALLAST. LIGHTS SUSPENDED ON CHAINS, HEIGHT ABOVE METAL PANELS TO BE DETERMINED ON SITE.
(C)	5	LITHONIA	GT-2-32-A12125-120-GEB10IS	2 X 32W T8 48"	1' X 4', 2 LAMP TROFFER, 120V, INSTANT START BALLAST, ACRYLIC DIFFUSER.
(D)	42	LITHONIA	MS5-1-54TSH0-ANSP10PS-CSA	2 X 54W T5 HO 46"	STRIP LIGHTING FOR CONFERENCE ROOM. T5 LAMPS, MVOLT
(E)	10	LITHONIA	2PM3N-G-B-3-U31-9-C-120-GEB10IS	3 X 31W T8 U	2' X 2', 3 LAMP, DEEP CELL PARABOLIC LUMINAIRE, DIFFUSER GOLD ANODIZED LOUVER FINISH, 9 CELLS, 120V, INSTANT START BALLAST
(ED)	1	LITHONIA	2PM3N-G-B-3-U31-9-C-120-GEB10IS	3 X 31W T8 U	2' X 2', 3 LAMP, DEEP CELL PARABOLIC LUMINAIRE, E1 TO BE WIRED AS NIGHT LIGHT.
(E)	5	LITHONIA	2GT8-3-U31-A12125-120-GEB10IS	3 X 31W T8 U	2' X 2', 3 LAMP, LOW PROFILE LUMINAIRE, ACRYLIC DIFFUSERS, 120V, INSTANT START BALLAST.
(G)	15	LITHONIA	LV3-120-CSA-3VDWIV-50MR16	1 X 50W MR16	PERIMETER POT LIGHTS, WALL WASH ADJUSTABLE, WHITE, 120V.
(H)	3	LITHONIA	2GT-4-32-PCIG-120-GEB10IS	4 X 32W T8 48"	2' X 4', 4 LAMP TROFFER, 120V, INSTANT START BALLAST, WITH PLASTIC CUBE LOUVER, GOLD WITH FLANGE.
(HD)	1	LITHONIA	2GT-4-32-A12125-120-GEB10IS	4 X 32W T8 48"	2' X 4', 4 LAMP TROFFER, 120V, INSTANT START BALLAST, WITH PLASTIC CUBE LOUVER, GOLD WITH FLANGE. H1 TO BE WIRED AS NIGHTLIGHT.
(I)	4	EXISTING			CLEAN & RELAMP, REPLACE LOUVERS WITH LITHONIA # PX. TYPE TO SUIT.
(J)	27	LITHONIA	LV3-120-CSA-3V01GZ-50MR16	1 X 50W MR16	POT LIGHTS FOR CONFERENCE ROOM - DIMMABLE, ADJUSTABLE SPECULAR OPEN (GOLD), 120V.
(K)	9	LUMACELL	MT-2 (2 - 9W HEADS)	24V MICRO TUNGSTEN	EMERGENCY LIGHT REMOTE (2) HEADS, 9 WATT OUTPUT/HEAD.
(L)	3	EDWARDS	FIGA-PS-CIGA-SB		PHOTO ELECTRIC SMOKE DETECTOR, EDWARDS MODEL FIGA-PS-CIGA-SB
(E-2)	8	LUMACELL	LER450-C860	LED	EXIT SIGN, 120 VOLT INPUT. SINGLE FACE UNIVERSAL MOUNT
(M)	1	LUMACELL	RG245432	24V MICRO TUNGSTEN	EMERGENCY LIGHTING BATTERY PACK W/LIGHT, 24 VOLT, 216 WATT OUTPUT.

ALL NEW LIGHTING FIXTURES AND BALLASTS TO BE POWERSMART APPROVED.
LIGHTING FIXTURE QUANTITIES SHOWN ABOVE ARE FOR REFERENCE ONLY. SUB-CONTRACTOR IS RESPONSIBLE FOR QUANTITY TAKE-OFF FROM DRAWING.



NOTES :
THESE DRAWINGS SHALL NOT BE SCALED.
THE SUB-CONTRACTOR SHALL VISIT THE SITE AND SATISFY ONESELF ALL DIMENSIONS, DATUM, AND DETAILED INFORMATION SHOWN ARE CORRECT.
THE SUB-CONTRACTOR IS TO REVIEW AND COORDINATE ALL ARCHITECTURAL, MECHANICAL, ELECTRICAL AND STRUCTURAL DRAWINGS FOR ADDITIONAL OPENINGS THROUGH FLOORS, WALLS, AND CEILINGS FOR DUCT, PIPE & ELECTRICAL RISERS AND ALL OPENINGS NOT SHOWN ON DRAWINGS.
ALL OPENINGS THROUGH FIRE ASSEMBLIES ARE TO BE FIRE STOPPED AND SEALED WITH U.L.C. APPROVED FIRE STOPPING TO MAINTAIN THE INTEGRITY OF THE FIRE SEPARATION, AND PROVIDE A SMOKE-TIGHT BARRIER.
ALL PRODUCTS AND MATERIALS TO BE USED AND INSTALLED SHALL CONFORM WITH MANUFACTURER'S SPECIFICATIONS & APPLICABLE CODES.
THE SUB-CONTRACTOR SHALL BE RESPONSIBLE TO PATCH AND MAKE GOOD ALL EXISTING CONSTRUCTION AFFECTED BY THE REMOVAL OF ALL ITEMS FORMING THE PART OF THE RENOVATION WORK.
WHERE NEW FLOORING AND BASE IS TO BE INSTALLED IN EXISTING AREAS (REFER TO FLOOR PLAN AND ROOM SCHEDULE) THE EXISTING FLOORING SURFACE AND BASE MUST BE REMOVED, UNLESS OTHERWISE NOTED. ALL FLOOR SURFACES SHALL BE PREPARED IN ACCORDANCE TO MANUFACTURER'S RECOMMENDATIONS FOR INSTALLATION OF NEW FLOOR.
WHERE PAINTING OF EXISTING WALLS IS INDICATED ON THE ROOM SCHEDULE, THESE WALLS MUST BE CLEANED OF ANY EXISTING WALL COVERING, PATCHED & PREPARED TO ACCEPT NEW MATERIAL, UNLESS OTHERWISE NOTED.
ALL NEW LIGHTING FIXTURES & NEW RECEPTACLES TO BE CONNECTED TO APPROPRIATE PANELS, EXCEPT FOR EMERGENCY LIGHT REMOTE HEADS TO BE CONNECTED TO EMERGENCY LIGHT BATTERY PACK(S).
SUB-CONTRACTOR MAY REUSE EXISTING BREAKERS & WIRING PROVIDED SAME IS IN GOOD CONDITION & MEETS ALL APPLICABLE CODES.
GENERAL DUTY RECEPTACLES SHALL BE CSA APPROVED, C/W TRIM PLATES MOUNTED AS PER EXISTING HEIGHT, EXCEPT FOR GFCI RECEPTACLES & ABOVE COUNTER, RECEPTACLE & TRIM PLATE COLORS TO BE DETERMINED.
DIMMERS SHALL BE CSA APPROVED COMMERCIAL SLIDE TYPE TO SUIT CIRCUIT LOAD.
SUPPLY & INSTALL LAMACOID NAME PLATES ON ALL PANEL BOARDS, SWITCHES & RECEPTACLES. PANEL SCHEDULE SHALL BE TYPED & ADHERED TO INSIDE OF ASSOCIATED PANEL DOOR.
ALL ABANDONED ELECTRICAL FIXTURES, COMPONENTS & RECEPTACLE WIRINGS SHALL BE REMOVED BACK TO SOURCE.
LIGHT FIXTURES NOT SHOWN CONNECTED TO LIGHT SWITCH SHALL BE WIRED TO JOHNSON CONTROL LIGHTING CONTROLLER, EXCEPT FOR NIGHTLIGHTS. CONSULT WITH CENTRAL CONTROLS. PH. 986-2351.
WARNING: ASBESTOS IS PRESENT IN THE MAIN FLOOR CEILING SPACE, & EAST & WEST AIR SHAFTS.

ORIGINAL SEALED BY:
D.A. Paley P. Eng.
Date: 2005.05.30

NO.	REVISION/DESCRIPTION	BY	DATE
SEALS			

DRAWN BY	RCP	CHECKED BY	APPROVED
DATE	2005.05.30	USER	APPROVAL

Winnipeg CITY OF WINNIPEG
PLANNING, PROPERTY & DEVELOPMENT DEPARTMENT
CIVIC ACCOMMODATIONS DIVISION
300 - 65 GARRY ST. R3C 4K4

PROJECT
ADMINISTRATION BUILDING
2nd FLOOR RENOVATIONS
CONFERENCE ROOM RENOVATIONS
510 MAIN STREET

SHEET TITLE
SECOND FLOOR PLAN
ELECTRICAL LIGHTING
RENOVATION

SCALE	PROJECT NO.	SHEET NO.
AS SHOWN	2004-180	E3

DRAWING SHEET SIZE: A1 (841mm x 594mm) PLOT 1:1