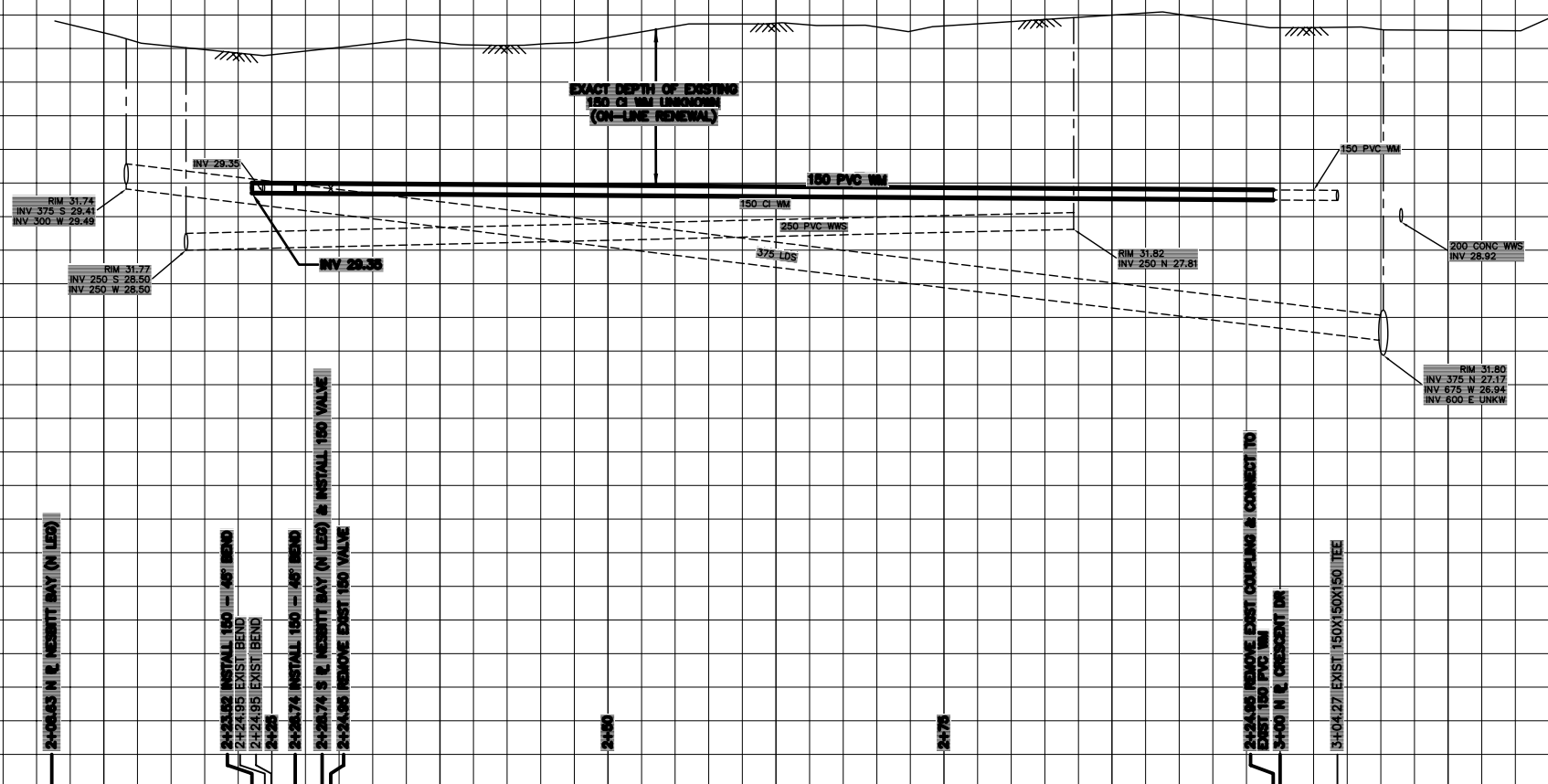


232.0
231.0
230.0
229.0
228.0
227.0
226.0
225.0
224.0
223.0

232.0
231.0
230.0
229.0
228.0
227.0
226.0
225.0
224.0
223.0



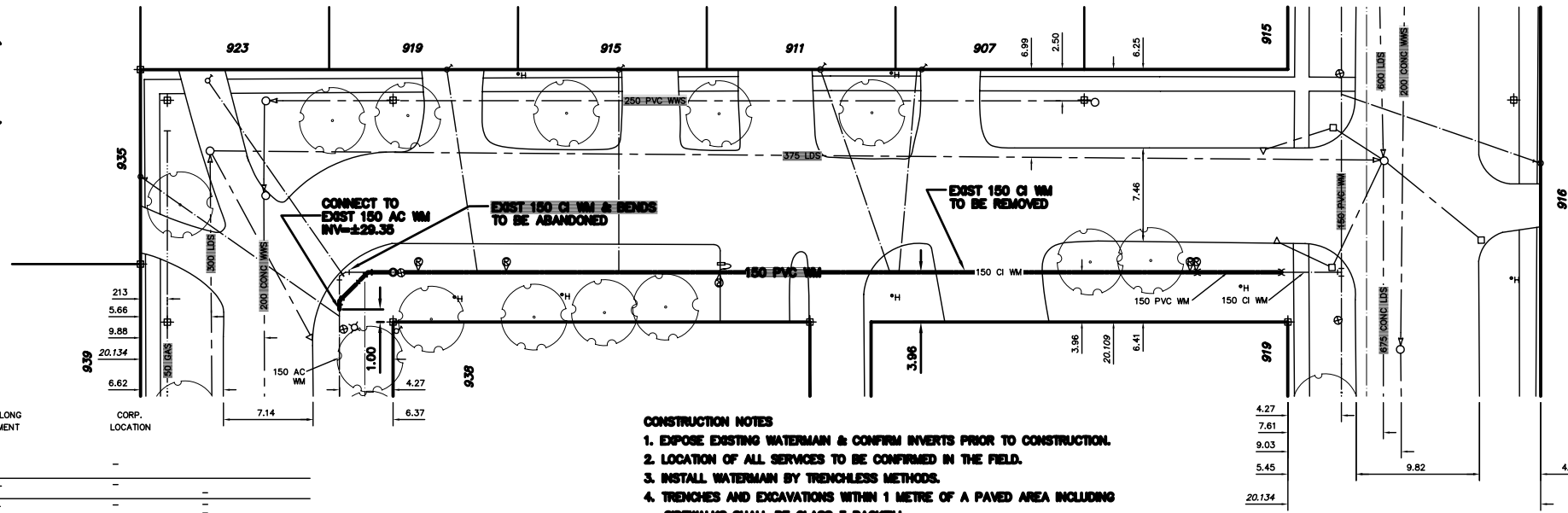
NOTE: CHAINAGES FROM NEW VALVE AT S R NESBITT BAY (N LEG) STA 2+28.74 ARE ALONG C NEW WATERMAIN

NOTE: CHAINAGES SHOWN ARE ALONG W R NESBITT BAY (E LEG) TO NEW VALVE AT S R NESBITT BAY (N LEG) STA 2+28.74

NESBITT BAY (E LEG)

NESBITT BY (N LEG)

CRESCENT DR



WATER SERVICE INFORMATION

ADDRESS	SIZE(mm) & TYPE (STREET)	SIZE(mm) & TYPE (PROP)	SHORT & LONG MEASUREMENT	CORP. LOCATION
907 NESBITT BAY RESIDENTIAL	20 COPPER	20 COPPER	1.07 NSL	-
911 NESBITT BAY RESIDENTIAL	20 COPPER	20 COPPER	4.27 NSGL	-
915 NESBITT BAY RESIDENTIAL	20 COPPER	20 COPPER	1.68 NSGL	-
919 NESBITT BAY RESIDENTIAL	20 COPPER	20 COPPER	3.86 NSGL	-
915 NESBITT BAY RESIDENTIAL	20 COPPER	20 COPPER	9.45 S HYD	-
923 NESBITT BAY RESIDENTIAL	20 COPPER	20 COPPER	4.57 SNHL	-
915 CRESCENT DR RESIDENTIAL	20 COPPER	20 COPPER	6.25 SNPL	6.71 WEHL
916 CRESCENT DR RESIDENTIAL	20 COPPER	20 COPPER	1.52 WEHL	5.49 E S/C
919 CRESCENT DR RESIDENTIAL	20 COPPER	20 COPPER	1.22 WHHL	1.52 E SC
919 CRESCENT DR RESIDENTIAL	20 COPPER	20 COPPER	15.85 W HYD	-

• SERVICES TO BE RENEWED TO R ALL OTHERS TO BE RECONNECTED

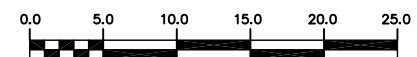
CONSTRUCTION NOTES

1. EXPOSE EXISTING WATERMAIN & CONFIRM INVERTS PRIOR TO CONSTRUCTION.
2. LOCATION OF ALL SERVICES TO BE CONFIRMED IN THE FIELD.
3. INSTALL WATERMAIN BY TRENCHLESS METHODS.
4. TRENCHES AND EXCAVATIONS WITHIN 1 METRE OF A PAVED AREA INCLUDING SIDEWALKS SHALL BE CLASS 3 BACKFILL.
5. ALL MATERIALS SHALL CONFORM TO THE CITY OF WINNIPEG STANDARD CONSTRUCTION SPECIFICATIONS.
6. MINIMUM COVER TO TOP OF WATERMAIN SHALL BE 2.4 m.
7. REPLACE ALL EXISTING LEAD SERVICES FROM PROPOSED WATERMAIN TO R.
8. NOTIFY ALL AFFECTED RESIDENTS AND BUSINESSES 24 HOURS IN ADVANCE OF ANY WATER SHUTDOWNS OR DISRUPTION OF SERVICE.

METRIC
WHOLE NUMBERS INDICATE MILLIMETRES
DECIMALIZED NUMBERS INDICATE METRES
NOTE: ALL VALVES TO BE INSTALLED COUNTERCLOCKWISE TO CLOSE

WARNING

IF POWER EQUIPMENT OR EXPLOSIVES ARE TO BE USED FOR EXCAVATION ON THIS PROJECT THE CONTRACTOR MUST:
1) NOTIFY THE GAS COMPANY OF THE PROPOSED LOCATION OF EXCAVATION.
2) TAKE PRECAUTION TO AVOID DAMAGE TO GAS COMPANY INSTALLATIONS.
SEE PROVINCIAL REGULATION 210/72 FOR DETAILS



EXISTING	LEGEND-PLAN	PROPOSED	EXISTING	LEGEND-PLAN	PROPOSED	EXISTING	LEGEND-PROFILE	PROPOSED
200 WM	WATERMAIN	200 WM	SL, HYDRO	150 WM	WATERMAIN	150 WM	WATERMAIN	150 WM
Hydrant symbol	HYDRANT	Hydrant symbol	MTS	Hydrant symbol	HYDRANT	Valve symbol	VALVE	Valve symbol
Valve symbol	VALVE	Valve symbol	TRAFFIC SIGNALS	Valve symbol	VALVE	525 LDS	LAND DRAINAGE SEWER	525 LDS
525 LDS	LAND DRAINAGE SEWER	525 LDS	50 GAS	50 GAS	50 GAS	300 LDS	LAND DRAINAGE SEWER	300 LDS
375 WWS	WASTEWATER SEWER	375 WWS	SURVEY BAR	250 WWS	WASTEWATER SEWER	250 WWS	WASTEWATER SEWER	250 WWS
Manhole symbol	MANHOLE	Manhole symbol	FENCE	Manhole symbol	MANHOLE	Profile symbol	C PROFILE	Profile symbol
Catch basin symbol	CATCH BASIN	Catch basin symbol	POLE - HYDRO, MTS	Profile symbol	GROUND ABOVE PIPE	Profile symbol	C DITCH (NORTH & WEST)	Profile symbol
Curb inlet symbol	CURB INLET	Curb inlet symbol	CURB STOP	Profile symbol	C DITCH (SOUTH & EAST)	Profile symbol	GUTTER (NORTH & WEST)	Profile symbol
Reducer symbol	REDUCER	Reducer symbol	GUY ANCHOR	Profile symbol	GUTTER (SOUTH & EAST)	Profile symbol	GUTTER (SOUTH & EAST)	Profile symbol
Coupler symbol	COUPLER	Coupler symbol	LIGHT STANDARD	Profile symbol	LIGHT STANDARD	Profile symbol	LIGHT STANDARD	Profile symbol
Anode symbol	ANODE	Anode symbol	TREE	Profile symbol	TREE	Profile symbol	TREE	Profile symbol

LOCATION APPROVED
UNDERGROUND STRUCTURES

SUPV. U/O STRUCTURES COMMITTEE DATE

NOTE: LOCATION OF UNDERGROUND STRUCTURES AS SHOWN ARE BASED ON THE BEST INFORMATION AVAILABLE BUT NO GUARANTEE IS GIVEN THAT ALL EXISTING UTILITIES ARE SHOWN OR THAT THE GIVEN LOCATIONS ARE EXACT. CONFIRMATION OF EXISTENCE AND EXACT LOCATION OF ALL SERVICES MUST BE OBTAINED FROM THE INDIVIDUAL UTILITIES BEFORE PROCEEDING WITH CONSTRUCTION.

B.M. ELEV.	FIELD BOOK #
POSTED TO LBIS	
NO. REVISIONS	DATE BY

CITY OF WINNIPEG
WATER AND WASTE ENGINEERING DIVISION

DESIGNED BY: SC
DRAWN BY: BW
HOR. SCALE: 1:250
VERTICAL: 1:50
DATE: 2005 03 18

CHECKED BY: KZ
APPROVED BY: KZ
RELEASED FOR CONSTRUCTION
DATE:

ENGINEER'S SEAL
ORIGINAL SIGNED BY K.R. ZUREK
05/03/18

BID OPPORTUNITY: 135-2005
FILENAME: D-8667_Nesbitt.dwg
PLOT DATE: 2005 03 18

THE CITY OF WINNIPEG
WATER AND WASTE DEPARTMENT

2005 WATERMAIN RENEWALS
NESBITT BAY (E LEG)
N LEG NESBITT BAY TO CRESCENT DRIVE

SHEET 6 OF 18
CITY DRAWING NUMBER
D-8667