

# WINTER 2017 PROJECT UPDATE

## Grant Park Recreation Campus Plan

### Project Background and Objectives:

City of Winnipeg's Standing Policy Committee on Protection and Community Services and City Centre Community Committee both recommended the need for a Grant Park Campus Plan & Feasibility Study. The study will build on existing policies and reports and further solicit comprehensive feedback from key stakeholders, area residents, seniors, community groups, sports/recreation groups, library users and government representatives.

HTFC Planning & Design have been selected to lead a consultant team to develop a coordinated plan to address deficiencies and opportunities presented by the well used recreational and institutional facilities on this property – many of which are at capacity – including the possible integration of a new neighbourhood library.

The Grant Park Recreation Campus Plan will provide the City of Winnipeg with the necessary development framework, costs and phasing priorities to establish budgets and begin charting a course for implementation.

More information and background documents are available for viewing at:

<http://winnipeg.ca/GrantParkRecreationCampusPlan>

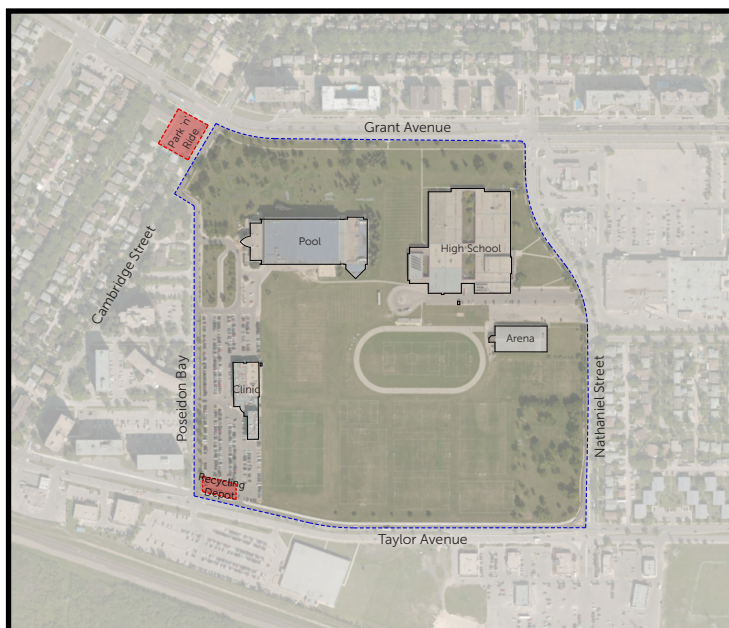
### Progress to Date:

Interviews with key stakeholders and user groups were conducted from July to September 2016 to obtain information regarding current and future services, programming and infrastructure, as well as identify any issues, concerns or possible opportunities related to particular facilities or programs. Interest in possible partnerships was also identified during the interview process.

As a follow up to the interviews, a presentation was conducted, on October 20, 2016, to inform the stakeholders on the site and program analysis the design team had conducted up to that point in time. Preliminary design ideas were presented to open up discussion among the various user groups.

Following the workshop, HTFC compiled and analyzed information from the stakeholders. The design team is currently working to incorporate the feedback and refine the design drawings.

As the design progresses, the stakeholders will be notified of new public engagement opportunities to take place early in the new year. They will also be provided with information to share with their networks in order to provide input for the next stages of the design process.



**We look forward to continuing our work with you! Please share with us your thoughts and comments!**

For further information, please contact:

Kate MacKay, Project Coordinator at the City of Winnipeg  
Phone: 204-451-0037  
Email: [kmackay@winnipeg.ca](mailto:kmackay@winnipeg.ca)

Information and updates regarding the Grant Park Campus Plan and Feasibility Study will continue to be posted on the City of Winnipeg website:  
[www.winnipeg.ca/GrantParkRecreationCampusPlan](http://www.winnipeg.ca/GrantParkRecreationCampusPlan)

# FREQUENTLY ASKED QUESTIONS

## Grant Park Recreation Campus Plan



**What is the Grant Park Recreation Campus Plan?** The current site – bounded by Grant Avenue to the north and Taylor Avenue to the south – is home to well-used facilities including the Pan Am Pool, the Charles A. Barbour Indoor Arena, and outdoor soccer fields. The public is being asked for their input on the future of the site and this input will lead to a detailed Grant Park Recreation Campus Plan.

**What is the plan? Who decides what is to be included? Are you just fixing up what is already in the area or will there be new facilities?** In addition to having identified some facilities that may be replaced or upgraded, such as the possible development of a new library to replace the existing River Heights Library and or the potential twinning of Charles A. Barbour Arena, we are asking for your input along the way to ensure that community has a say in what is included. Public input gathered as part of this process will lead to a detailed Grant Park Recreation Campus Plan – a guide for both the short-term and long-term renewal of the area in a way that meets the needs of residents, families, students and seniors.

**How long will this project take? Is it being done in phases or all at once?** For now, this is a planning process only. The scope and timing of the project(s) will be determined as the plan is developed and decisions are made. The results of the planning process will be used to inform the community, Council and will support decision-making.

**Why is the City of Winnipeg doing this? How much will it cost?** Some of the community infrastructure available to the Grant Park neighbourhood and surrounding area is in need of repair and upgrades. The City's Library Redevelopment Strategy makes clear that the need for a modernized library to serve the River Heights/Grant Park neighbourhood is a priority. It is possible that this new library development could be included in the Grant Park Recreation Campus and serve as the 'kick-off' project for the broader plan. Establishing cost estimates for the project will be part of the planning process.

**Why does the City plan to replace the River Heights Library?** The existing River Heights Library does not meet the accessibility and programming needs of the community and requires significant renewal and upgrades to comply with the Province's new Accessibility for Manitobans Act. The existing Library building's mechanical and electrical systems are at or near the end of their service lifespan and there are significant structural issues in the building envelope that must be addressed in the near future. The Grant Park Campus Plan & Feasibility study includes public consultation to determine community support for the development of a new, relocated River Heights Library on the campus site. The new River Heights Library will better meet the needs of the community with fully accessible public space, more parking, tutorial and programming rooms, improved study and leisure areas and an outdoor reading and programming area.

**How will the new development impact me?** The Campus Plan will consider recreation and leisure opportunities for all ages. Inclusion for seniors' programming in multi-use facilities, accessibility improvements, and improved circulation between sites will be a part of the planning and design process.

**Will this work occur during the same time as Waverley Underpass construction?** This is a planning process only at this point. Once the plan is complete, timelines for construction will be considered in conjunction with other projects happening in the area. Reducing the impact of any potential construction on traffic in the area will be considered and construction of improvements would be scheduled to avoid nearby project construction as much as possible.

**How will the City keep me informed and how can I provide input?** The City of Winnipeg project website will be updated as the Grant Park Recreation Campus Plan study progresses. Online opportunities to provide input and feedback to design options will be available. Notice of upcoming public open house events will be advertised in local newspapers and posted in the project area City of Winnipeg facilities (River Heights Library, Pan Am Pool, Charles A. Barbour Arena).

For additional frequently asked questions (FAQs) please visit the project website at:

<http://winnipeg.ca/GrantParkRecreationCampusPlan>